



AUTOFLASH-120/240

Troubleshooting / Part Identification



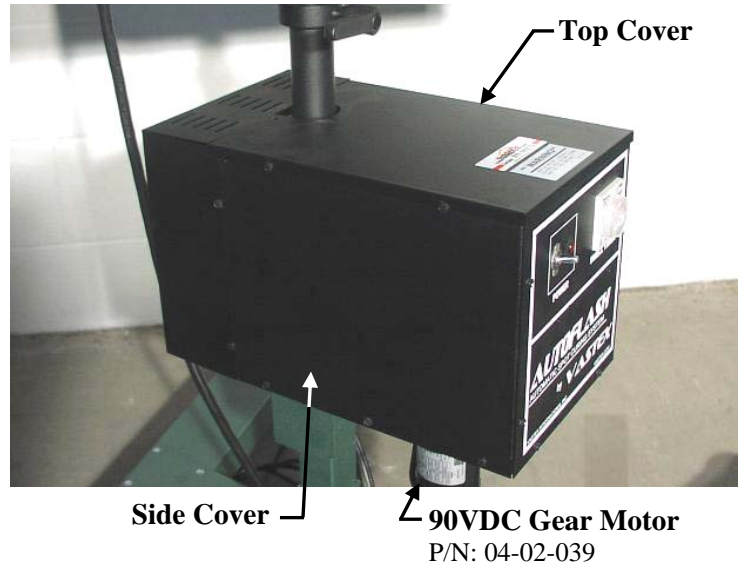
This manual contains the following documents.

- **Control box and Control Tray Part Reference**
- **Troubleshooting**
- **Wiring Diagram**

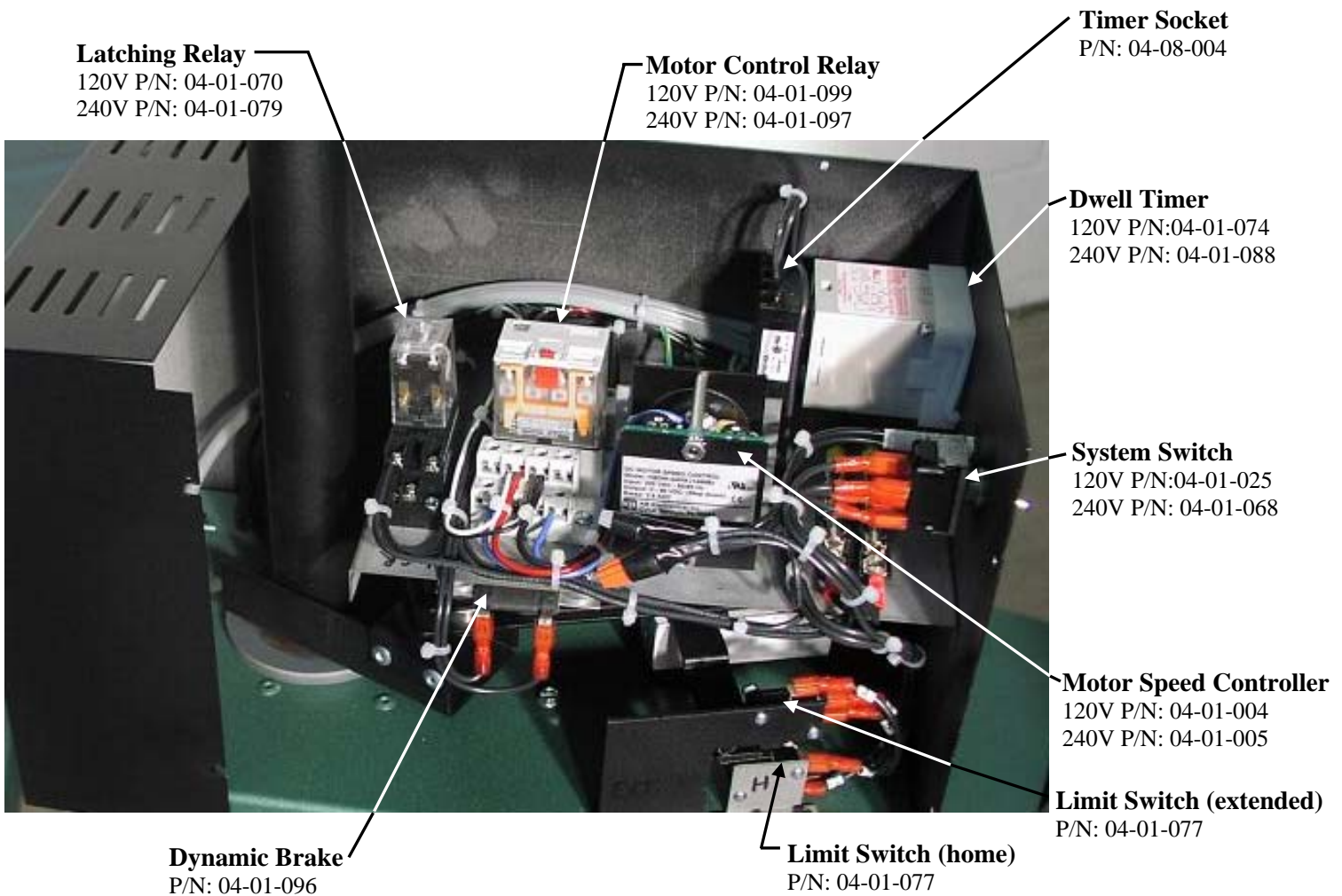
Vastex International, Inc.
1032 N. Irving St.
Allentown, Pa. 18109 USA
Phone# 610 434-6004
Fax# 610 434-6607
Web Site www.vastex.com
E-Mail info@vastex.com

Control Box AF-120/240

Unplug the Autoflash Unit before entering the control box. Remove top and side cover to access the controls.



Control Tray Part Reference

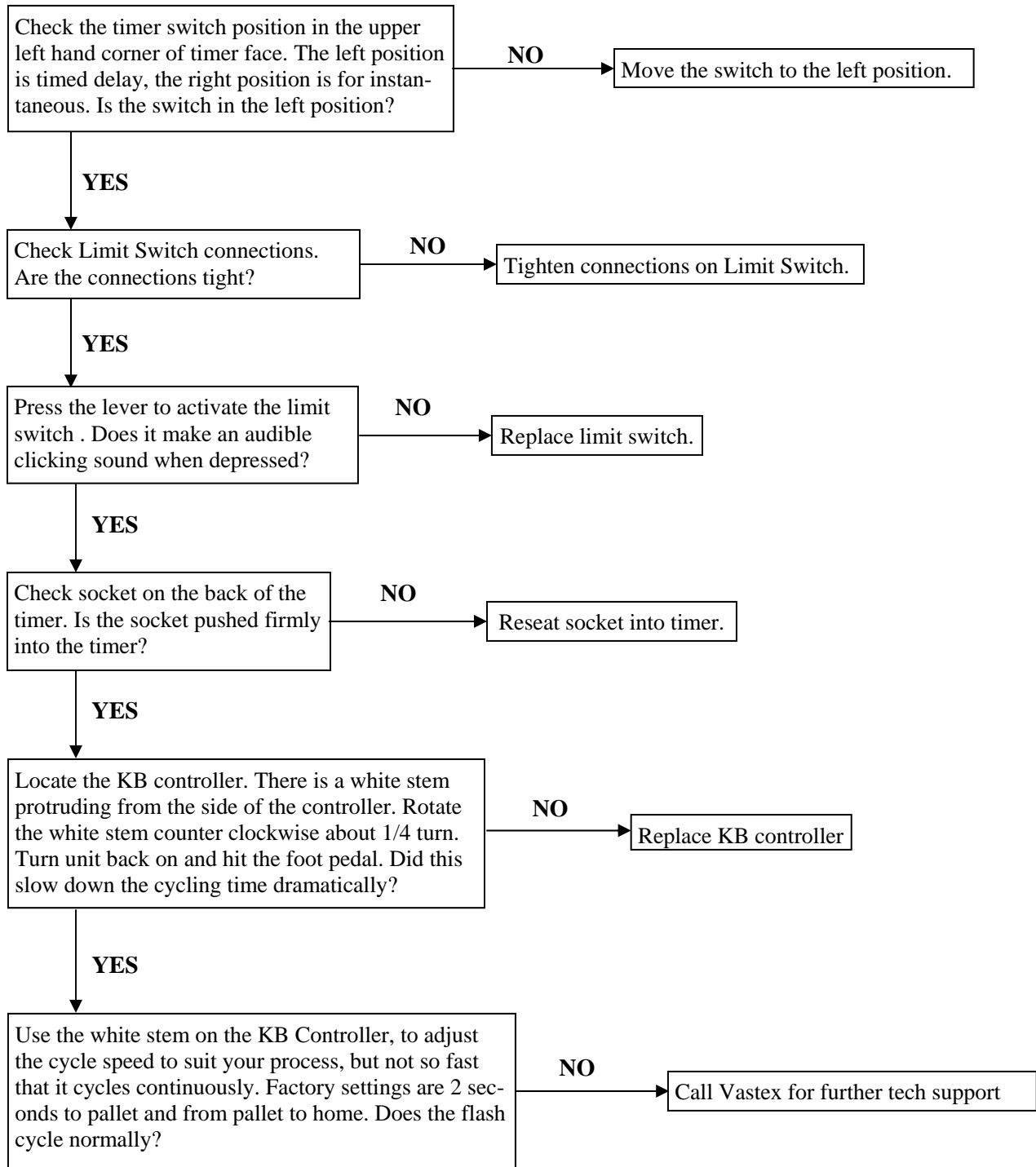


Troubleshooting Flow Charts

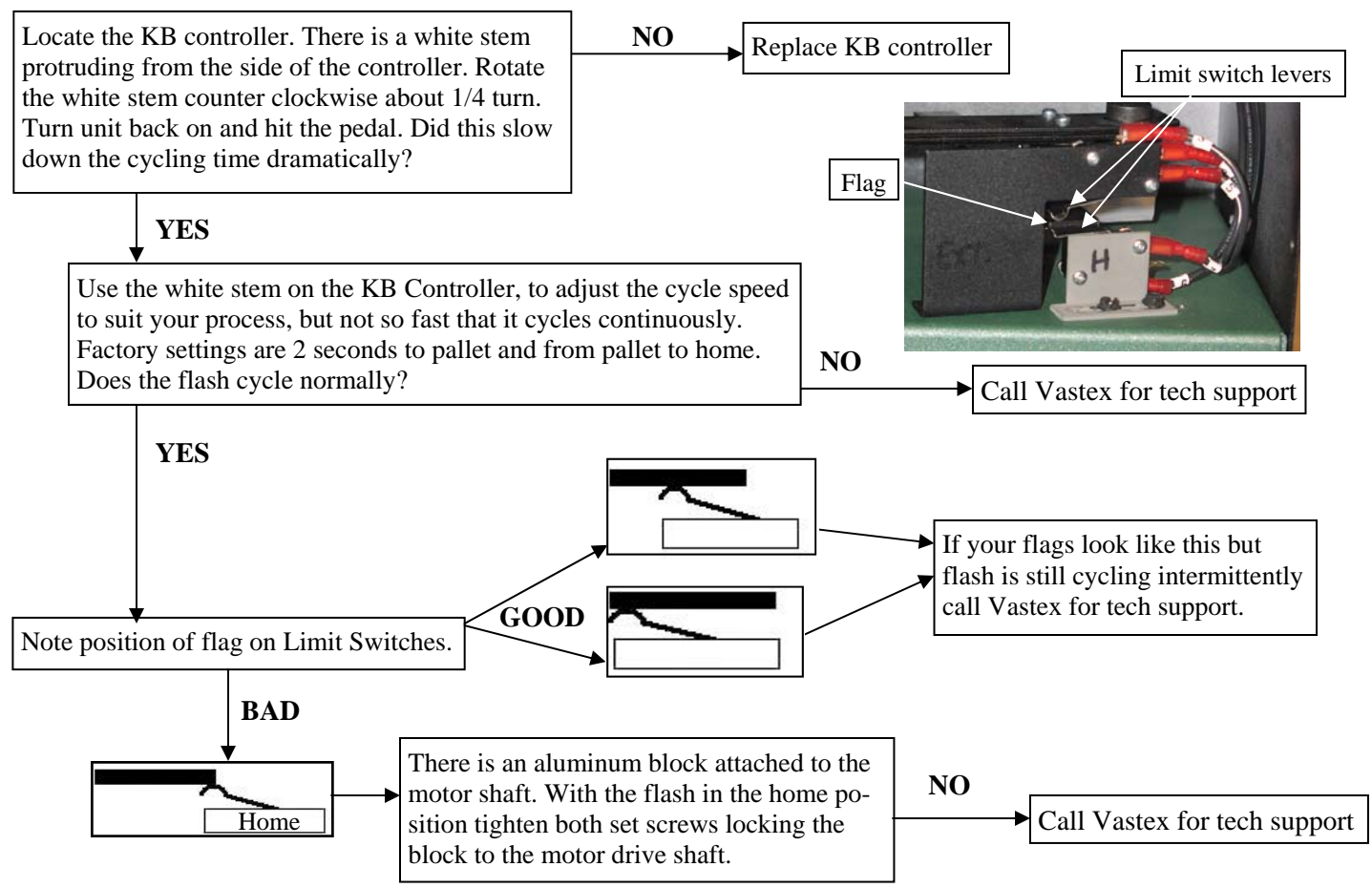
Refer to previous page for component identification.

It will be necessary to plug in and turn on the main power switch throughout the troubleshooting process. Always unplug the flash before touching any component in the control box. Remove the top and side covers to access the controls.

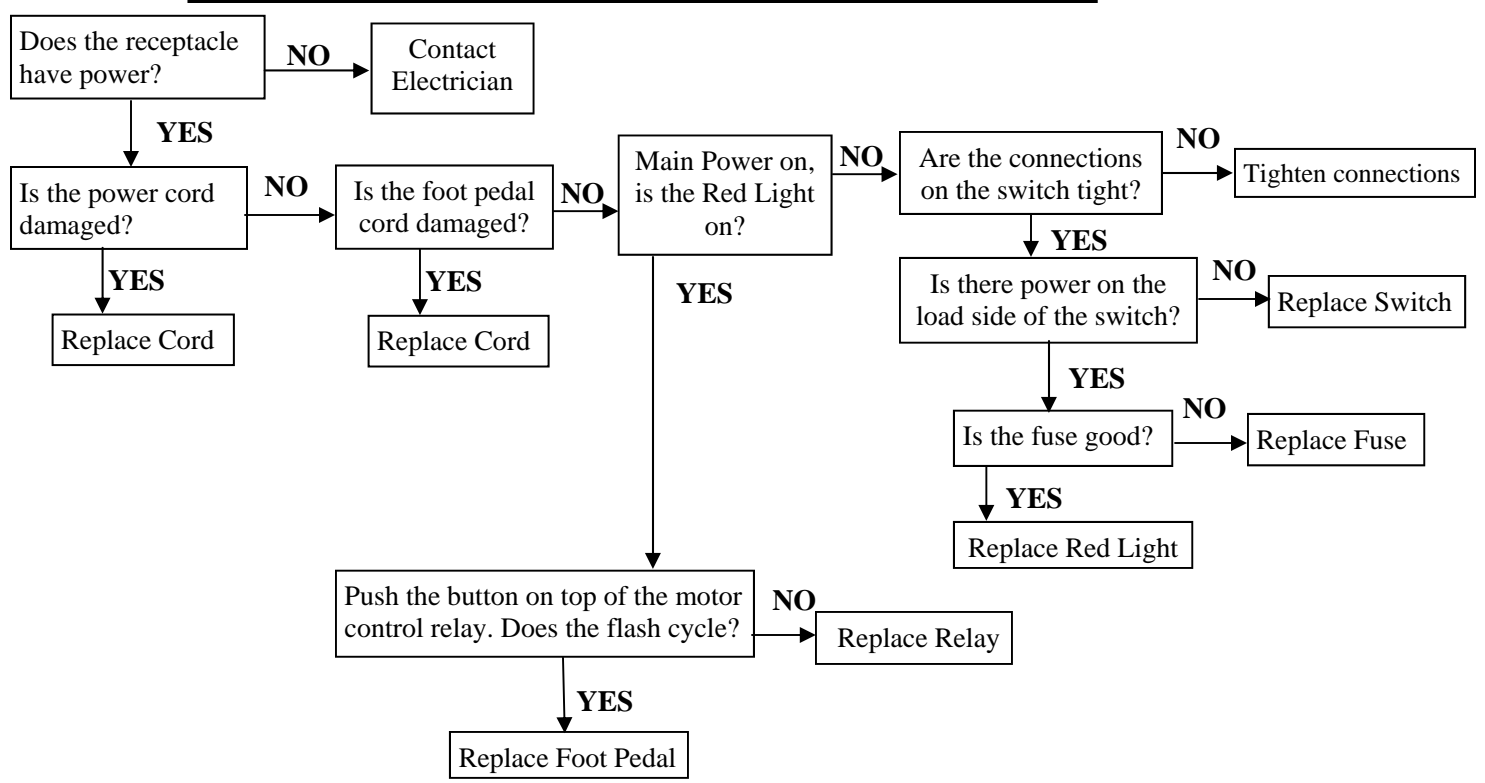
Autoflash cycling continuously



Autoflash cycling intermittently

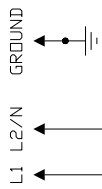


Autoflash does not cycle when foot pedal is pressed



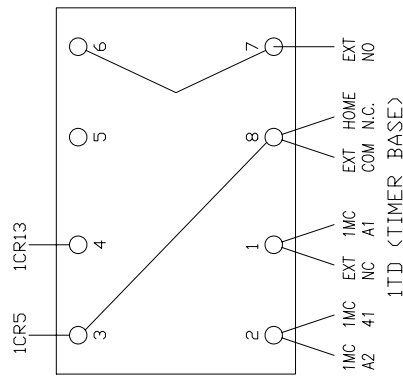
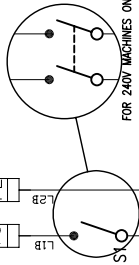
02-03-023

120/240 VAC, 1ϕ

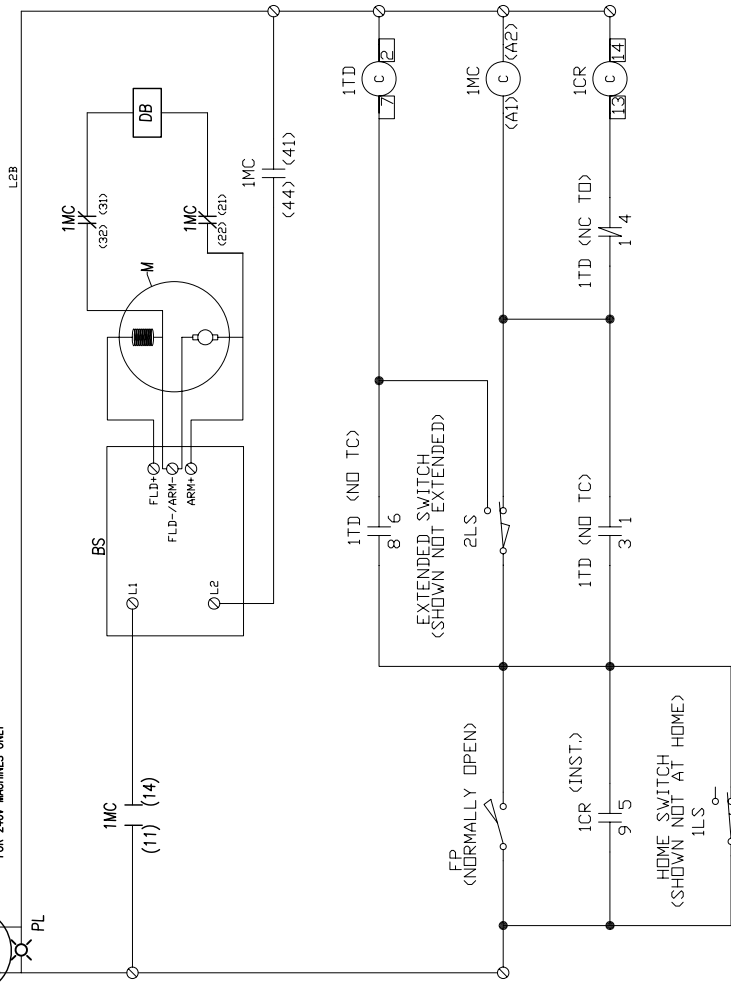


Disconnect

F1, F2 (F2 FOR 240V CIRCUIT ONLY)



	FOR 120V MACHINES	FOR 240V MACHINES
BS	90VDC BELT CONTROL	04-01-004
1CR	LATCHING RELAY	04-01-070
DB	DYNAMIC BRAKE	04-01-096
F1/F2	3 AMP AGC SYSTEM FUSE	04-03-025
FP	FOOT PEDAL	04-03-168
1LS/2LS	LIMIT SWITCH	04-01-077
M	90VDC GEAR MOTOR	04-02-039
1MC	MOTOR CONTROL RELAY	04-01-099
1TD	DWELL TIMER	04-01-074
S1	SYSTEM SWITCH	04-01-025



V-ASTEX INTERNATIONAL

PRECISION PRINTING
SPACE FILING

TOLERANCES UNLESS OTHERWISE SPECIFIED

XXX	.XX	.X
DECIMAL	±.010	±.015
FRACTION	±1/16	
ANGLE	±1°	

BY: TODD M/9/16
DATE: 1/23

DRAWN: []
CHECKED: []
APPROVED: []

SCALE: NONE

TITLE: WIRING DIAGRAM AF-120/AF-240
AUTOFLASH 120/240 VOLT

SIZE: C
DRAWING NO.: 02-03-023
REV# A

SHEET 1 OF 1